

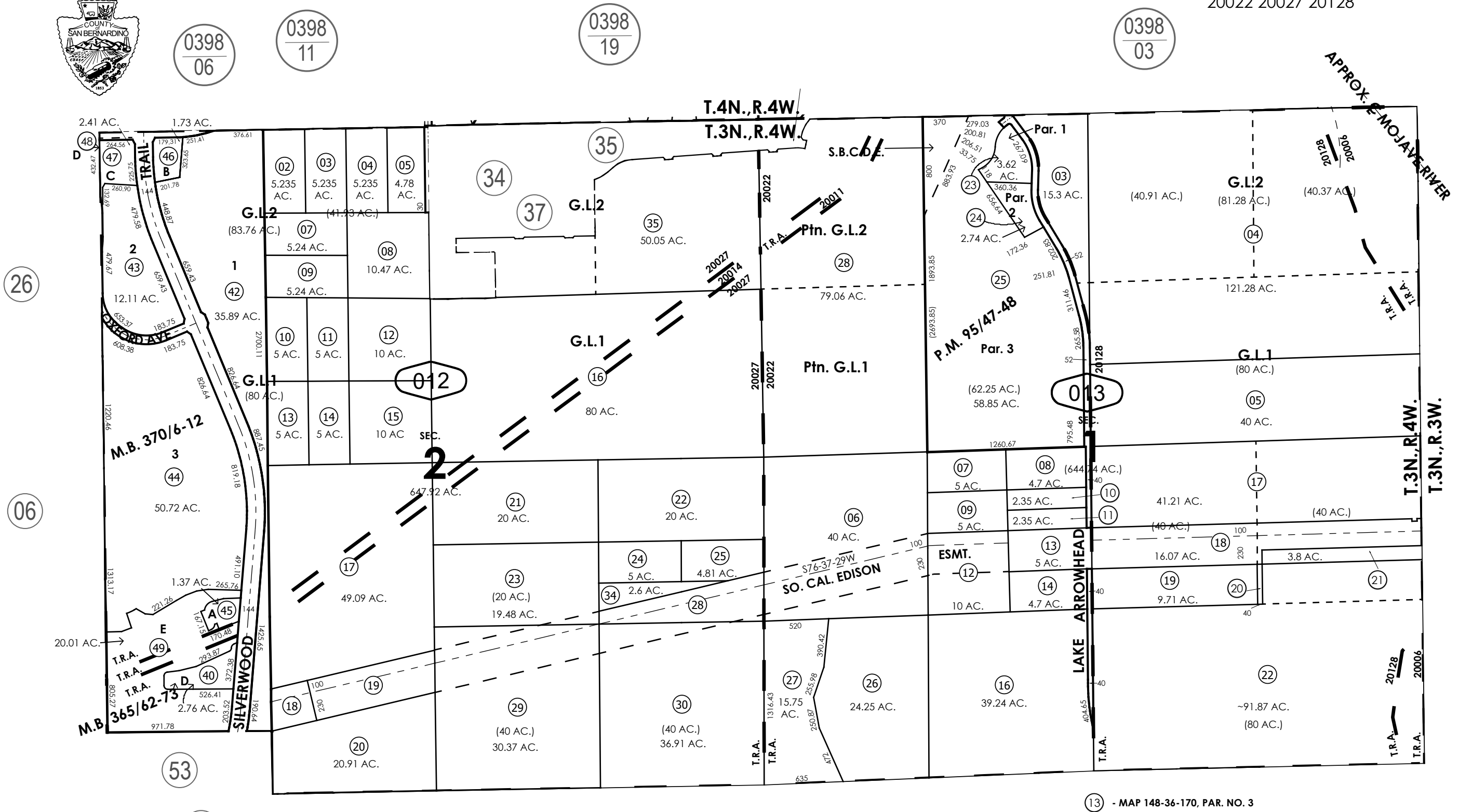
THIS MAP IS FOR THE PURPOSE
OF AD VALOREM TAXATION ONLY.



Fractional Sec.1&2, T.3N.,R.4W., S.B.B.&M.

City of Hesperia
Tax Rate Area
20006 20011 20014
20022 20027 20128

0397 - 01



March 2004

Ptn. Tract No. 18989-2, M.B. 370/6-12
Parcel Map No. 8762, P.M. 95/47-48
Ptn. Tract No. 18989-1, M.B. 365/62-73

- 48 - MAP 148-36-169, PAR. NO. 5
- 19 - MAP 148-36-170, PAR. NO. 1
- 28 - MAP 148-36-170, PAR. NO. 2
- 34 - MAP 148-36-170C, PAR. NO. 1

02

Assessor's Map
Book 0397 Page 01
San Bernardino County

REVISED
10/27/23 KC
04/23/24 RU
05/06/25 KC
09/16/25 BS