

THIS MAP IS FOR THE PURPOSE  
OF AD VALOREM TAXATION ONLY.

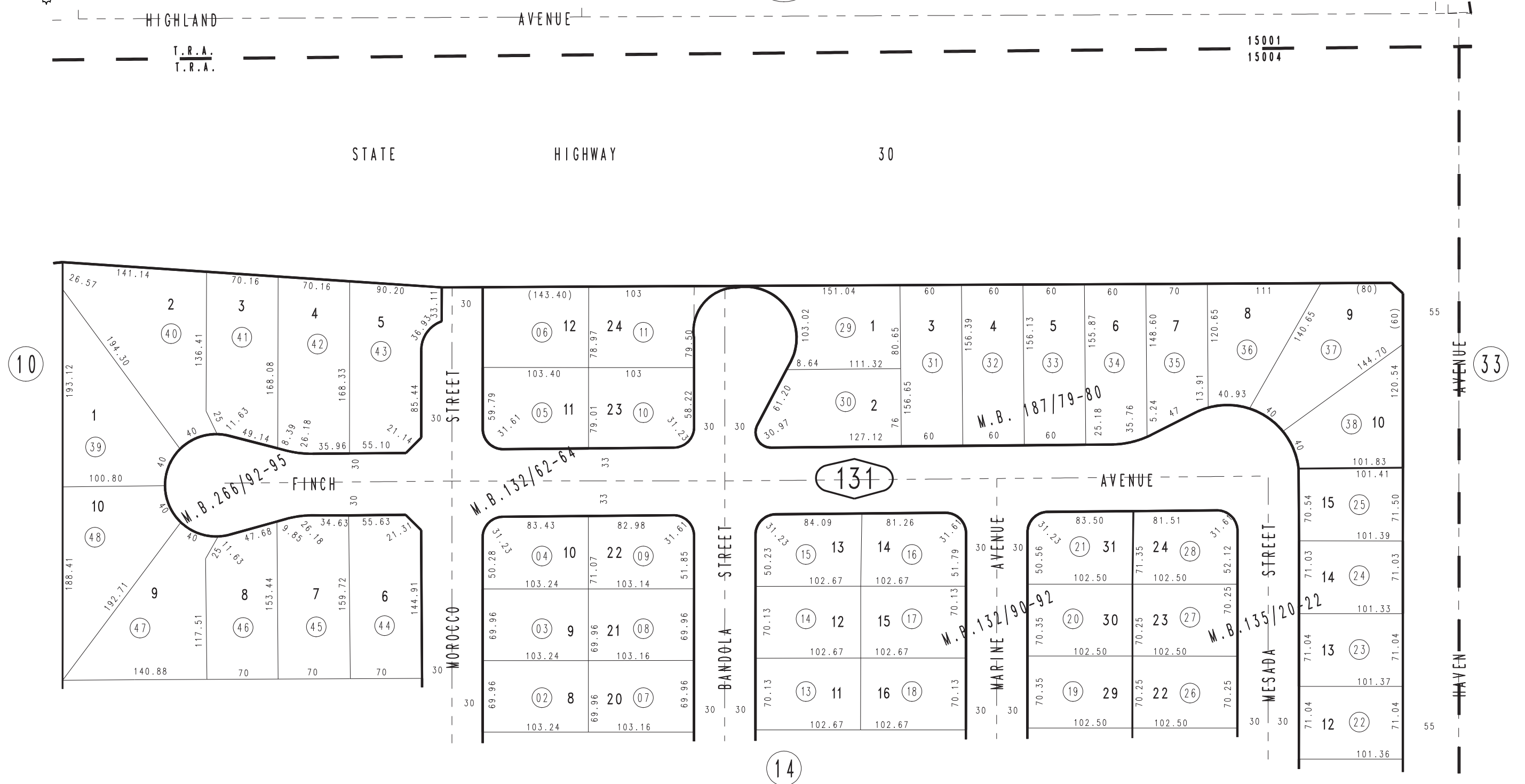
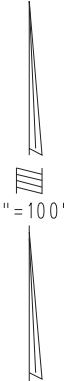
Ptn. N.1/2, N.E.1/4, Sec. 35, T.1N., R.7W., S.B.M.

City of Rancho Cucamonga  
Tax Rate Area  
15001,15004

1076 - 13



0201  
75



Ptn. Tract No. 15531, M.B. 266/92-95  
Ptn. Tract No. 11932, M.B. 187/79-80  
Ptn. Tract No. 9366, M.B. 135/20-22  
Ptn. Tract No. 9370, M.B. 132/90-92  
Ptn. Tract No. 9429, M.B. 132/62-64

MAY 1988

Assessor's Map  
Book 1076 Page 13  
San Bernardino County

REVISED  
08/05/25 RU