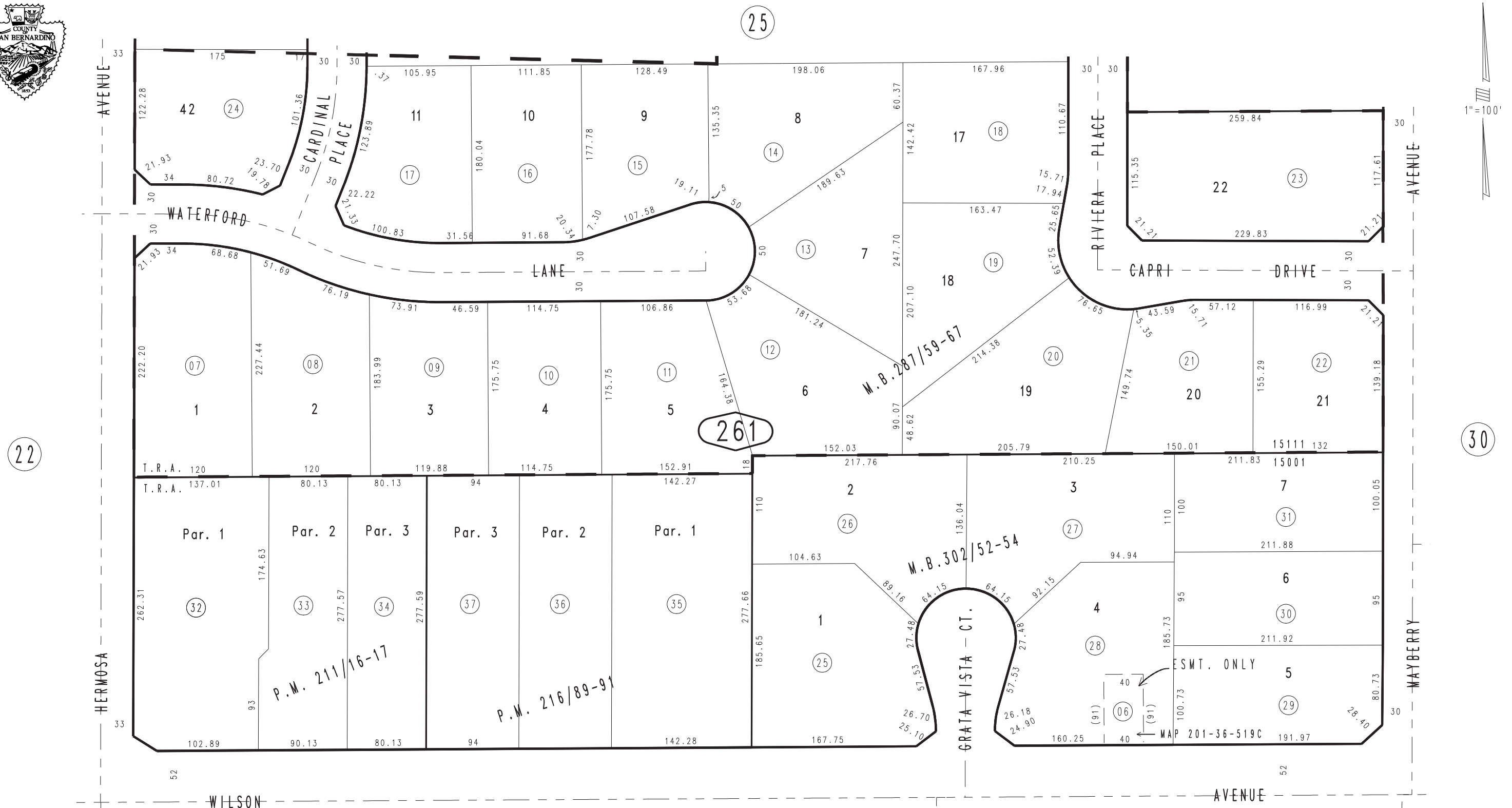


THIS MAP IS FOR THE PURPOSE  
OF AD VALOREM TAXATION ONLY.



Ptn. Tract No. 16193, M.B. 287/59-67

City of Rancho Cucamonga 1074 - 26  
Tax Rate Area  
15001,15111



MAY 1988

Parcel Map No. 16089, P.M. 216/89-91  
Tract No. 16274, M.B. 302/52-54  
Parcel Map No. 16455, P.M. 211/16-17

Ptn. S.E.1/4, Sec. 23  
T.1N., R.7W.

Assessor's Map  
Book 1074 Page 26  
San Bernardino County

REVISED  
08/05/25 RU