

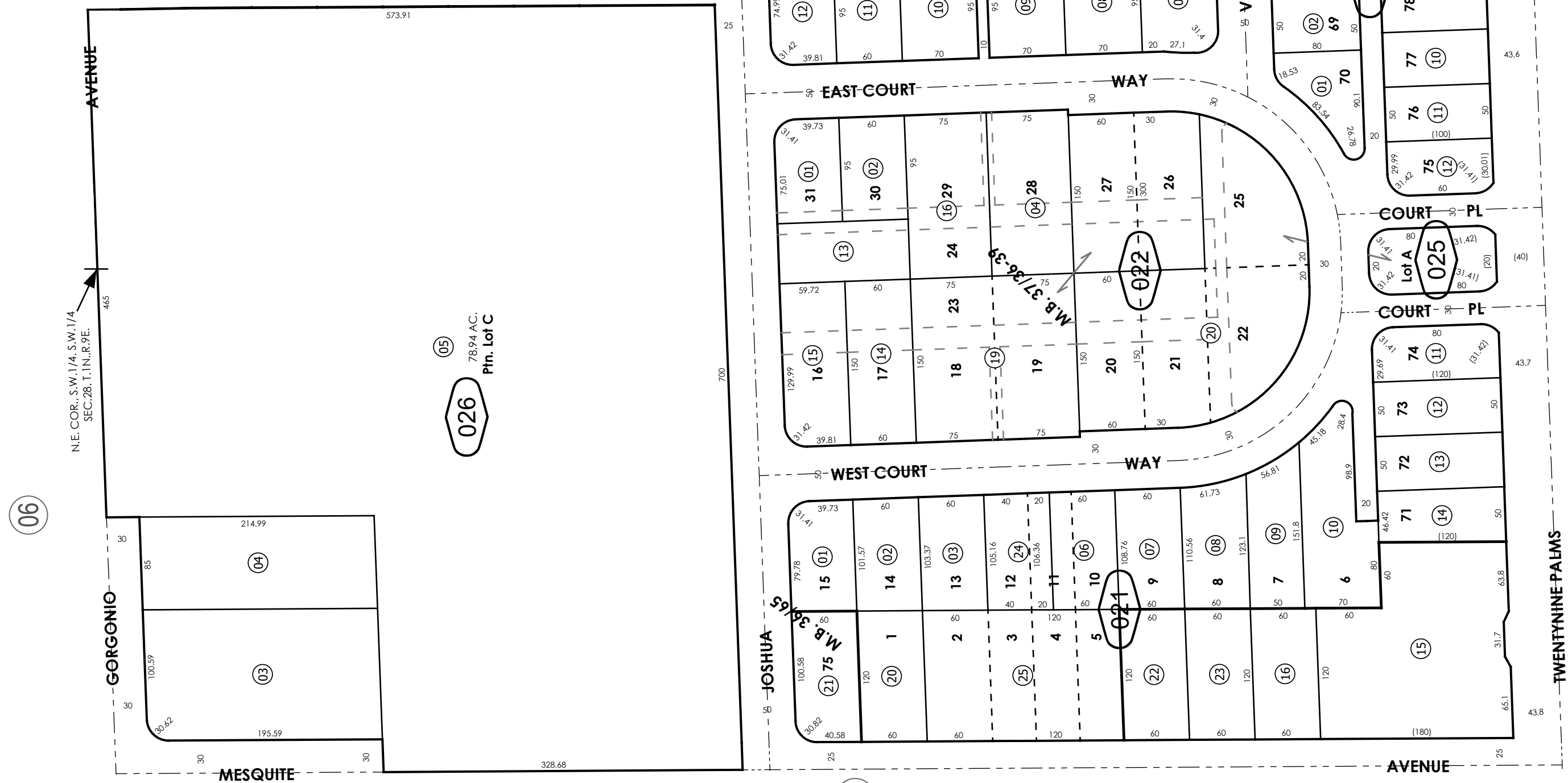
THIS MAP IS FOR THE PURPOSE
OF AD VALOREM TAXATION ONLY.



Ptn. S.W.1/4, S.W.1/4, Sec.28, T.1N.,R.9E., S.B.B.&M.
Ptn. Tract No. 2613, M.B. 37/36-39
Tract No. 2559, M.B. 36/65

City of Twentynine Palms
Tax Rate Area
19015

0623 - 02



0617
23

Assessor's Map
Book 0623 Page 02
San Bernardino County

REVISED
04/07/22 AP
06/10/24 CA
07/01/25 BS