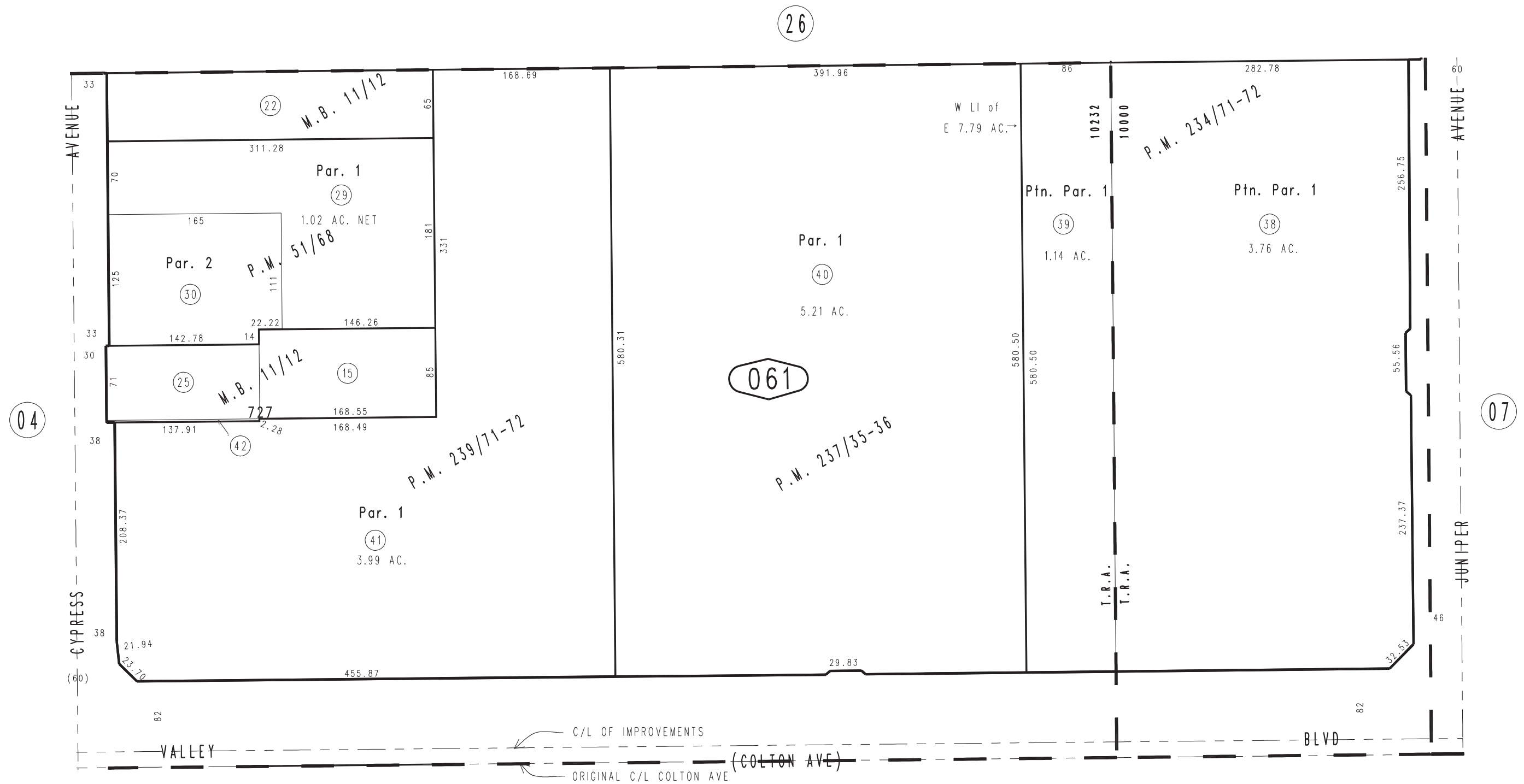



$$'' = 100'$$


Parcel Map No. 19313, P.M. 239/71-72  
Parcel Map No. 19231, P.M. 237/35-36  
Parcel Map No. 18963, P.M. 234/71-72  
Parcel Map No. 5586, P.M. 51/68

Ptn. N.E.1/4, Sec. 19  
T.1S., R.5W.

Assessor's Map  
Book 0251 Page 06  
San Bernardino County

REVISED  
08/22/25 RU