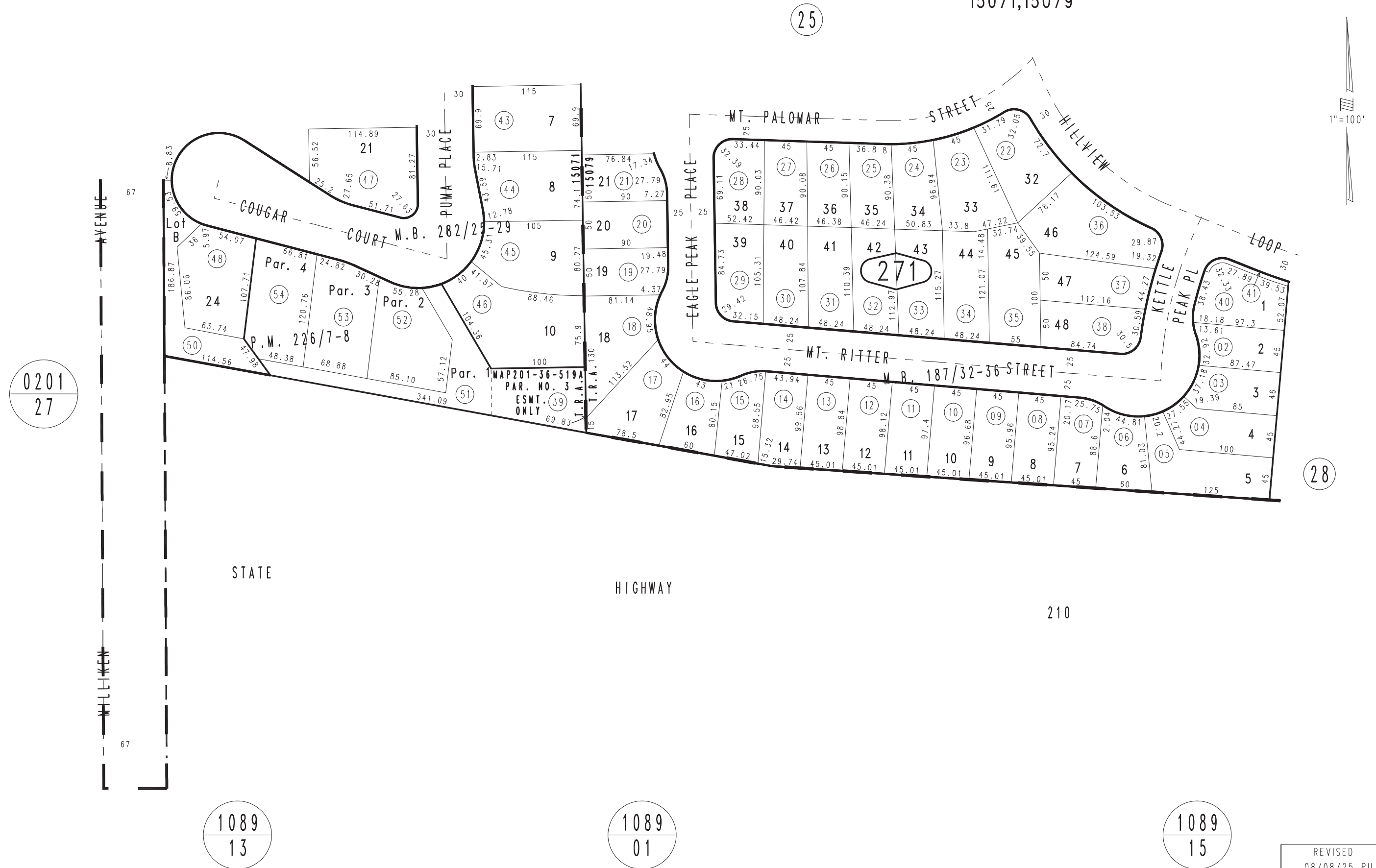


THIS MAP IS FOR THE PURPOSE
OF AD VALOREM TAXATION ONLY.



Ptn. Tract No. 12936, M.B. 187/32-36

City of Rancho Cucamonga 0225- 27
Tax Rate Area
15071,15079



July 2004

Ptn. Tract No. 15866, M.B. 282/25-29
Parcel Map No. 16884, M.B. 226/7-8

Ptn. S.W.1/4, Sec.30
T.1N.,R.6W.

Assessor's Map
Book 0225 Page 27
San Bernardino County

REVISED
08/08/25 RU