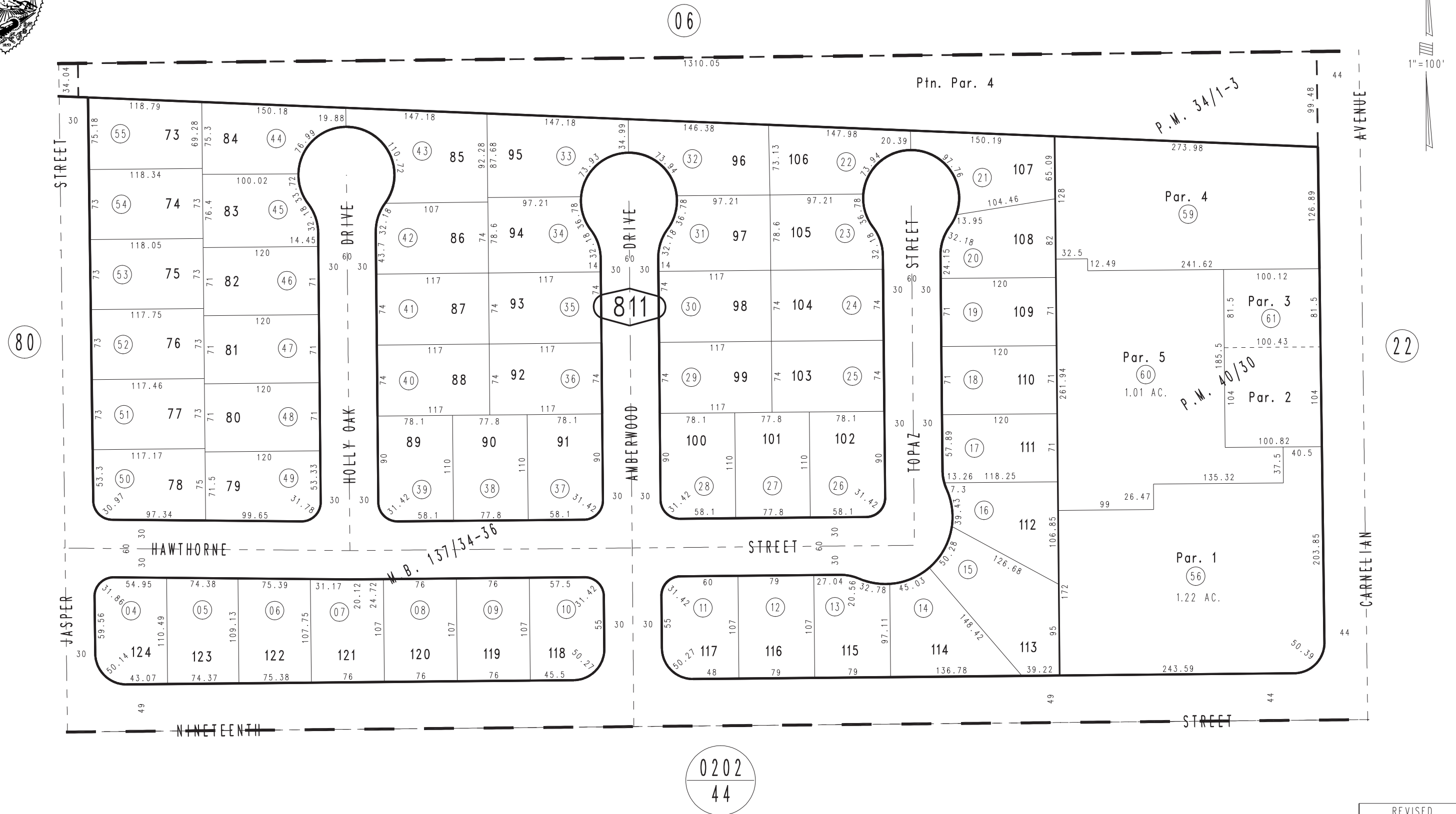


THIS MAP IS FOR THE PURPOSE  
OF AD VALOREM TAXATION ONLY.



Ptn. Parcel Map No. 3708, P.M. 34/1-3

City of Rancho Cucamonga 0201-81  
Tax Rate Area  
15005



July 2004

Parcel Map No. 4255, P.M. 40/30  
Ptn. Tract No. 9325, M.B. 137/34-36

Assessor's Map  
Book 0201 Page 81  
San Bernardino County

REVISED  
08/06/25 RU